



DUAL LATEROLOG - GR
DENSITY - NEUTRON

Compact

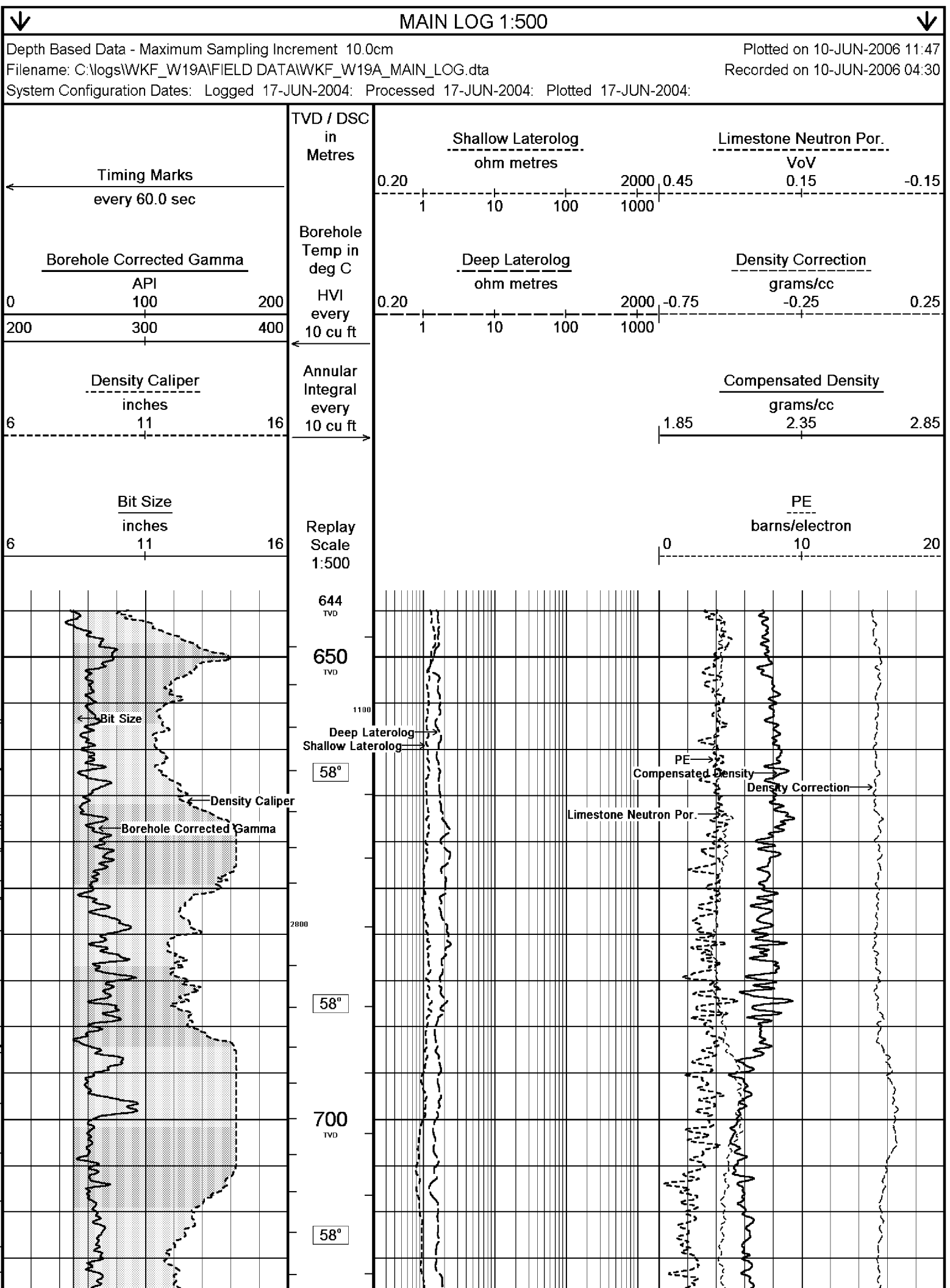
1:500 TVD

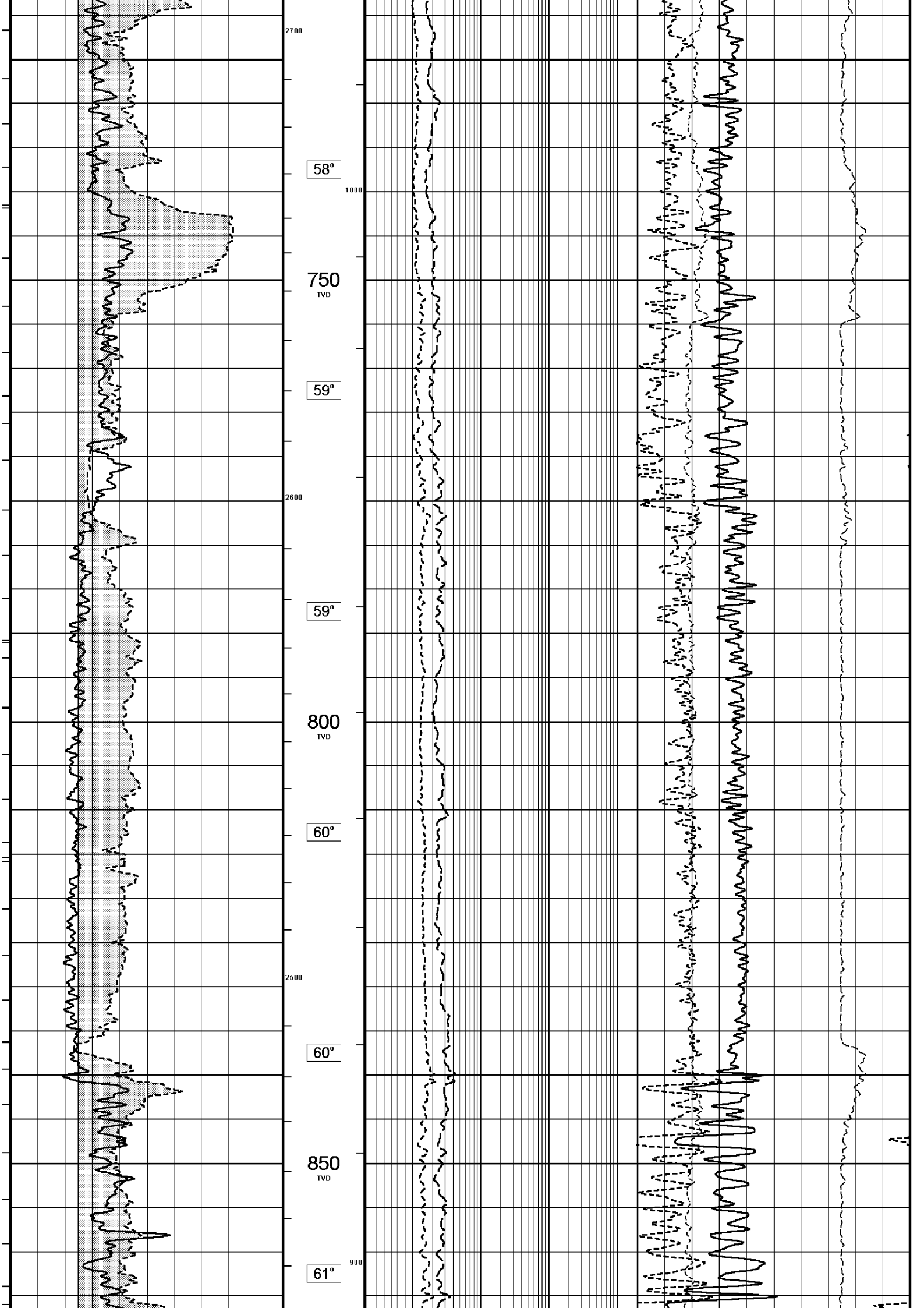
COMPANY				ESSO AUSTRALIA PTY.LTD			
WELL				WKF W19A			
FIELD				KINGFISH GDA94			
PROVINCE/COUNTY				BASS STRAIT, VICTORIA			
COUNTRY/STATE				AUSTRALIA			
LOCATION				S 38 35 34.833, E 148 6 19.318			
				N 5727806.791 m, E 596262.840 m			
				FIELD PRINT			
LSD	SEC	TWP	RGE	Other Services			
				COMPENSATED SONIC			
API Number							
Permit Number							
Permanent Datum L				, Elevation 0.0		metres	
Log Measured From DF @ 33.4m				above Permanent Datum			
Drilling Measured From DF							
Date	10-JUN-2006					Elevations: KB 33.43 metres DF 33.43 metres GL -76.13 metres	
Run Number	ONE						
Depth Driller	2373.41			metres			
Depth Logger	2370.70			metres			
First Reading	2358.95			metres			
Last Reading	649.30			metres			
Casing Driller	649.30			metres			
Casing Logger	649.30			metres			
Bit Size	8.50			inches			
Hole Fluid Type	KCL/PHPA						
Density / Viscosity	1.13 g/cc		23.00 CP				
PH / Fluid Loss	8.80		3.40 ml/30Min				
Sample Source	FLOWLINE						
Rm @ Measured Temp	0.106 @ 25.0			ohm-m			
Rmf @ Measured Temp	0.085 @ 25.0			ohm-m			
Rmc @ Measured Temp	0.114 @ 25.0			ohm-m			
Source Rmf / Rmc	MEAS		MEAS				
Rm @ BHT	0.05 @ 79.3			ohm-m			
Time Since Circulation	37 HRS						
Max Recorded Temp	83.20		deg C				
Equipment Name	CWL						
Equipment / Base	1		SALE				
Recorded By	R L TENCH, B J R MOSS						
Witnessed By	T LOBO						
LAST CIRC	8/06 04:00			Last Line			

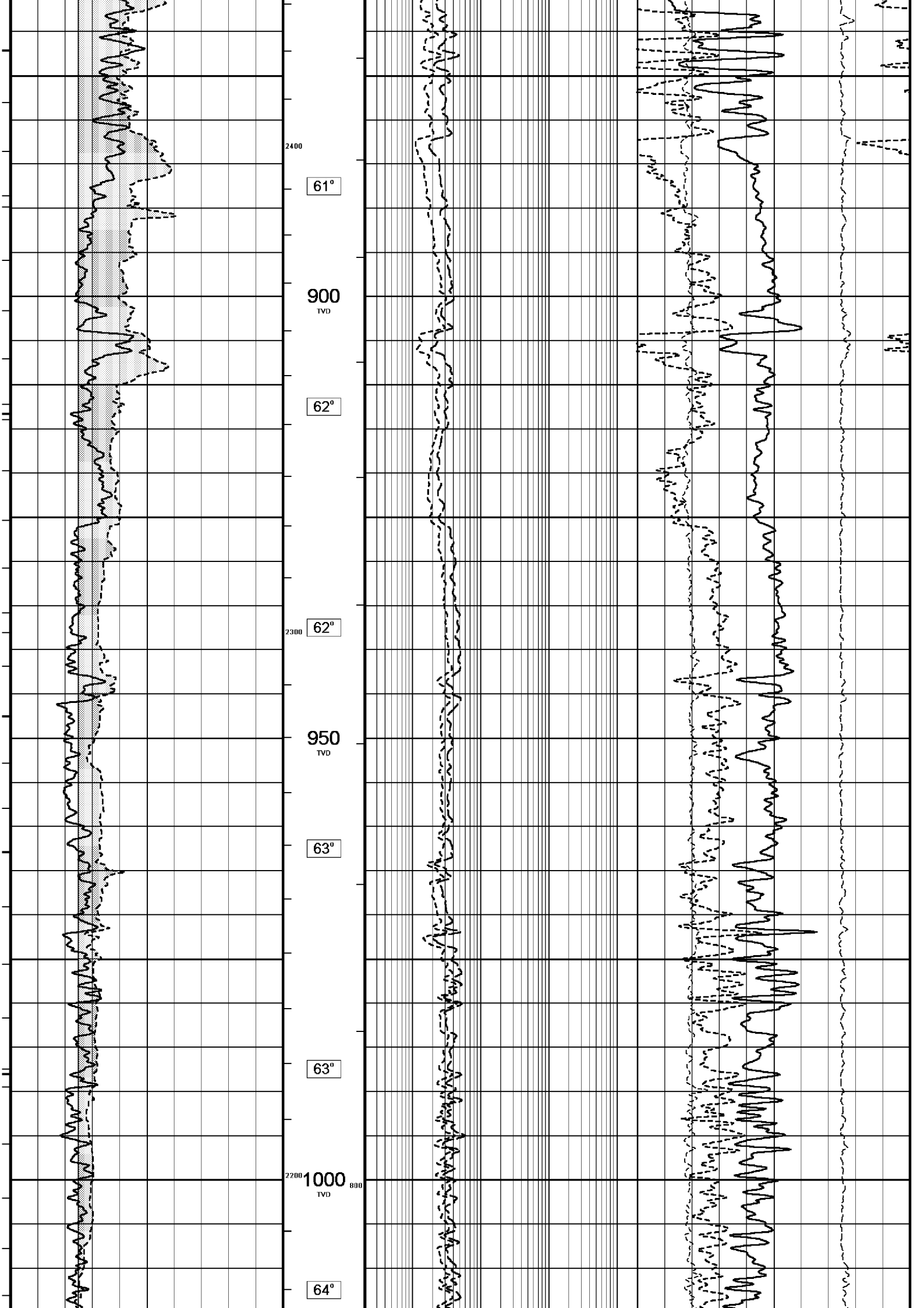
BOREHOLE RECORD				
Bit Size inches		Depth From metres		Depth To metres
8.500		666.00		2687.00
CASING RECORD				
Type	Size inches	Depth From metres	Shoe Depth metres	Weight pounds/ft
K-55	10.750	0.00	666.00	40.50

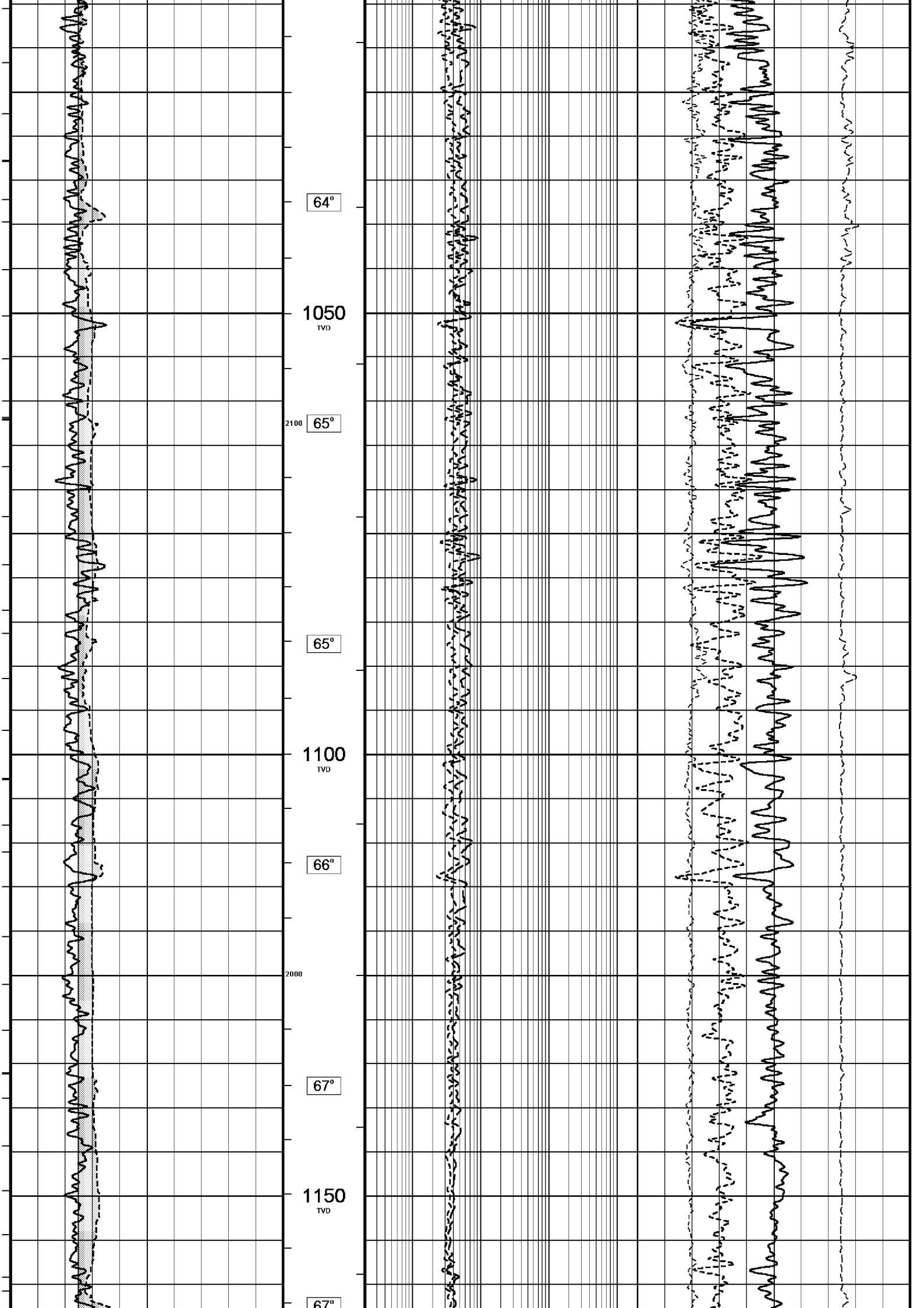
REMARKS
RIG: NABORS 453
5" SHUTTLE/MEMORY COMPACT OPERATION. CREW: R TENCH , B MOSS , B GOODWIN, M KOLCZE.
FIELD FINAL LOGS TO BE CORRELATED TO ANADRILL GAMMA LOG.
MAX. TEMPERATURE: 83.2 DEG C AT 2636 m MD MAX. INCLINATION: 37 DEG AT 665 m MD MAX. DOGLEG SERVERITY: 6.21 DEG/30m AT 696.25 m MD DEPLOYMENT ANGLE: 26.98 DEG
HVOL: 2890 FT^3 AVOL: 1120 FT^3
LOGGING SPEED 6M/MIN FROM TD TO 2439.2 M MD LOGGING SPEED 12 M/MIN FROM 2439.2 TO 1749.3 M MD LOGGING SPEED 6 M/MIN FROM 1749.3 TO 1519.3 M MD LOGGING SPEED 12 M/MIN FROM 1519.3 TO 1289.4 M MD LOGGING SPEED 6 M/MIN FROM 1289.4 TO 628.8 M MD

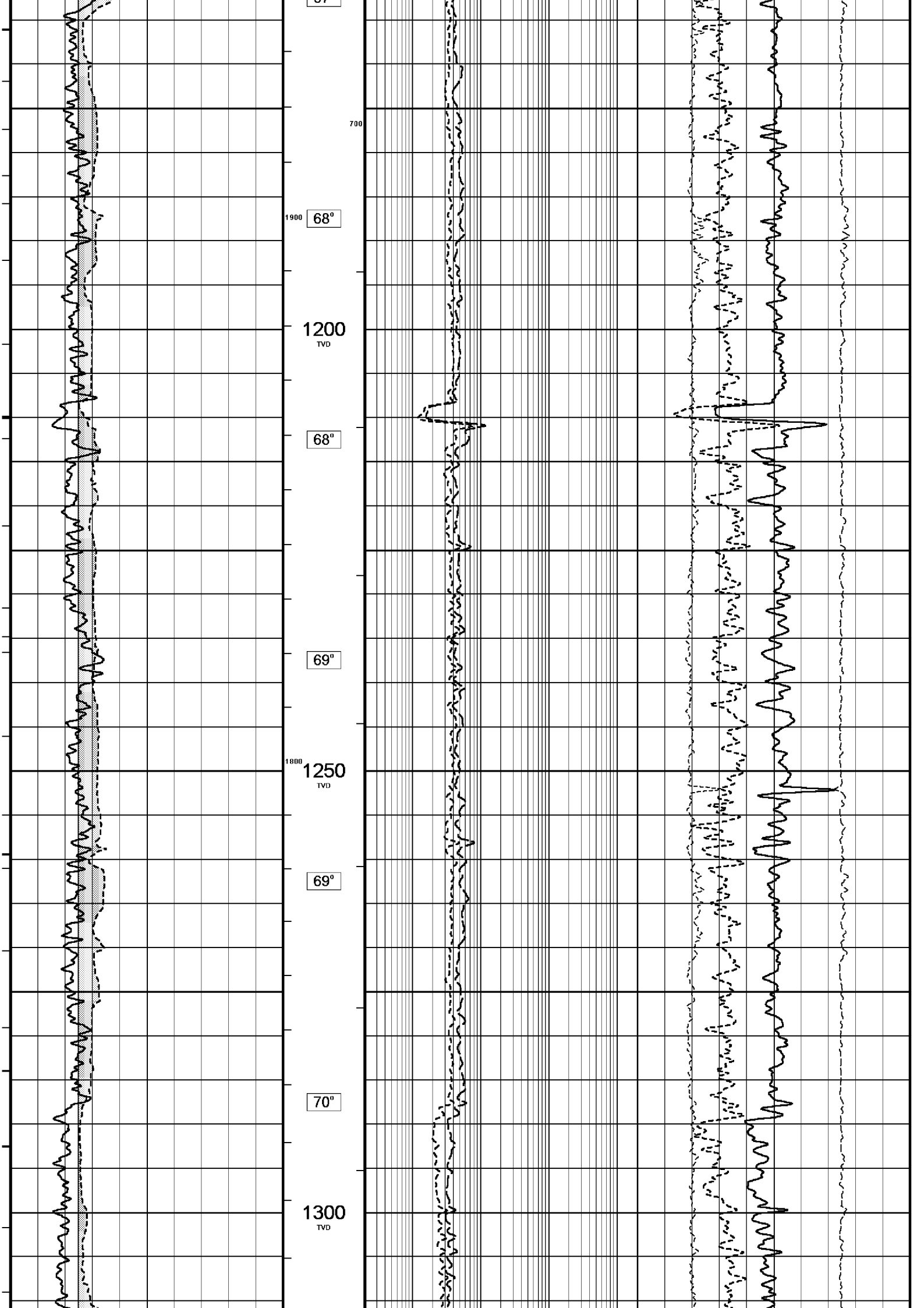
All interpretations are opinions based on inference from electrical or other measurements and we cannot, and do not, guarantee the accuracy or correctness of any interpretations, and we shall not, except in the case of gross or wilful negligence on our part, be liable or responsible for any loss, costs, damages or expenses incurred or sustained by anyone resulting from any interpretation made by any of our officers, agents or employees. These interpretations are also subject to our general terms and conditions in our price schedule.

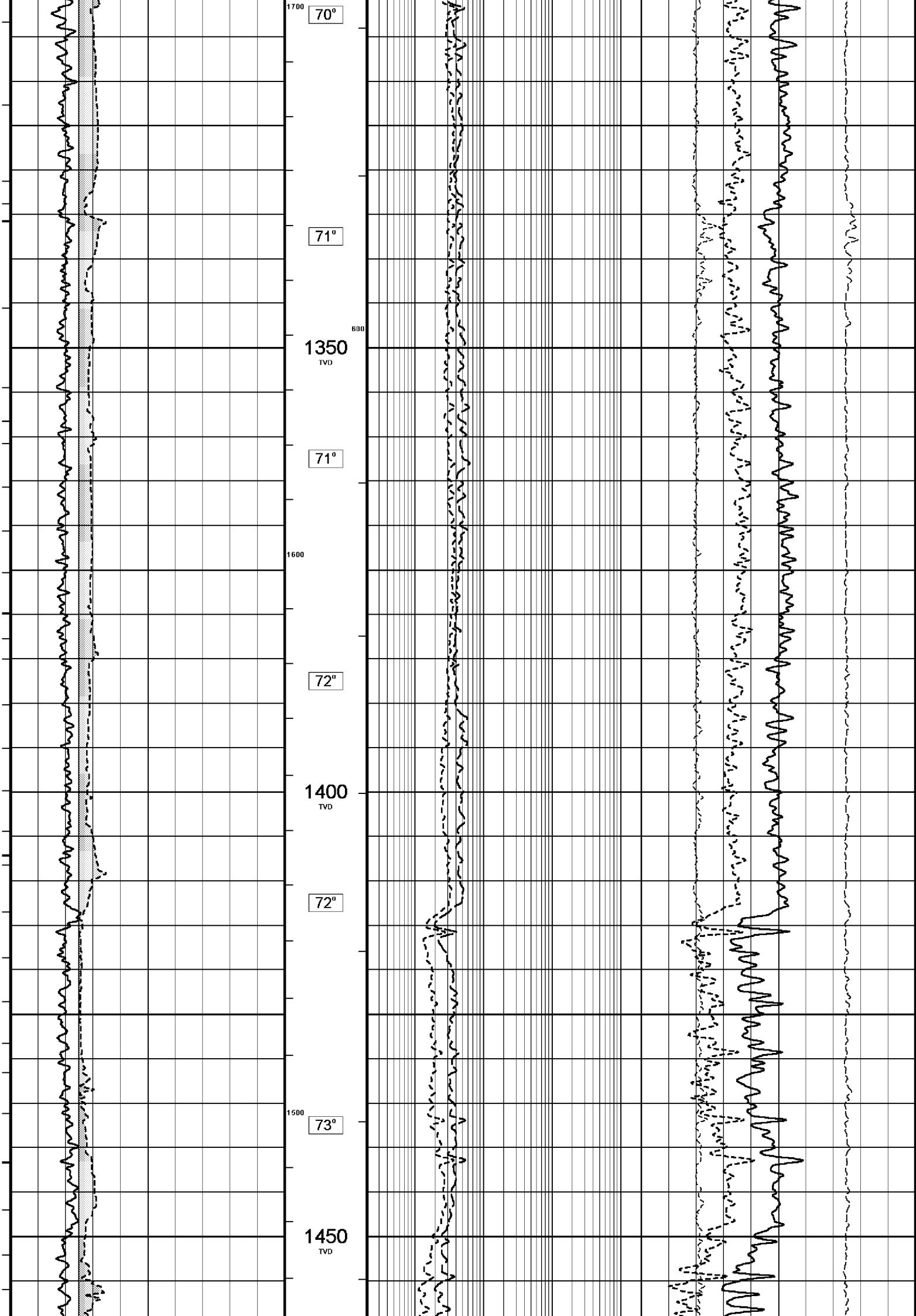


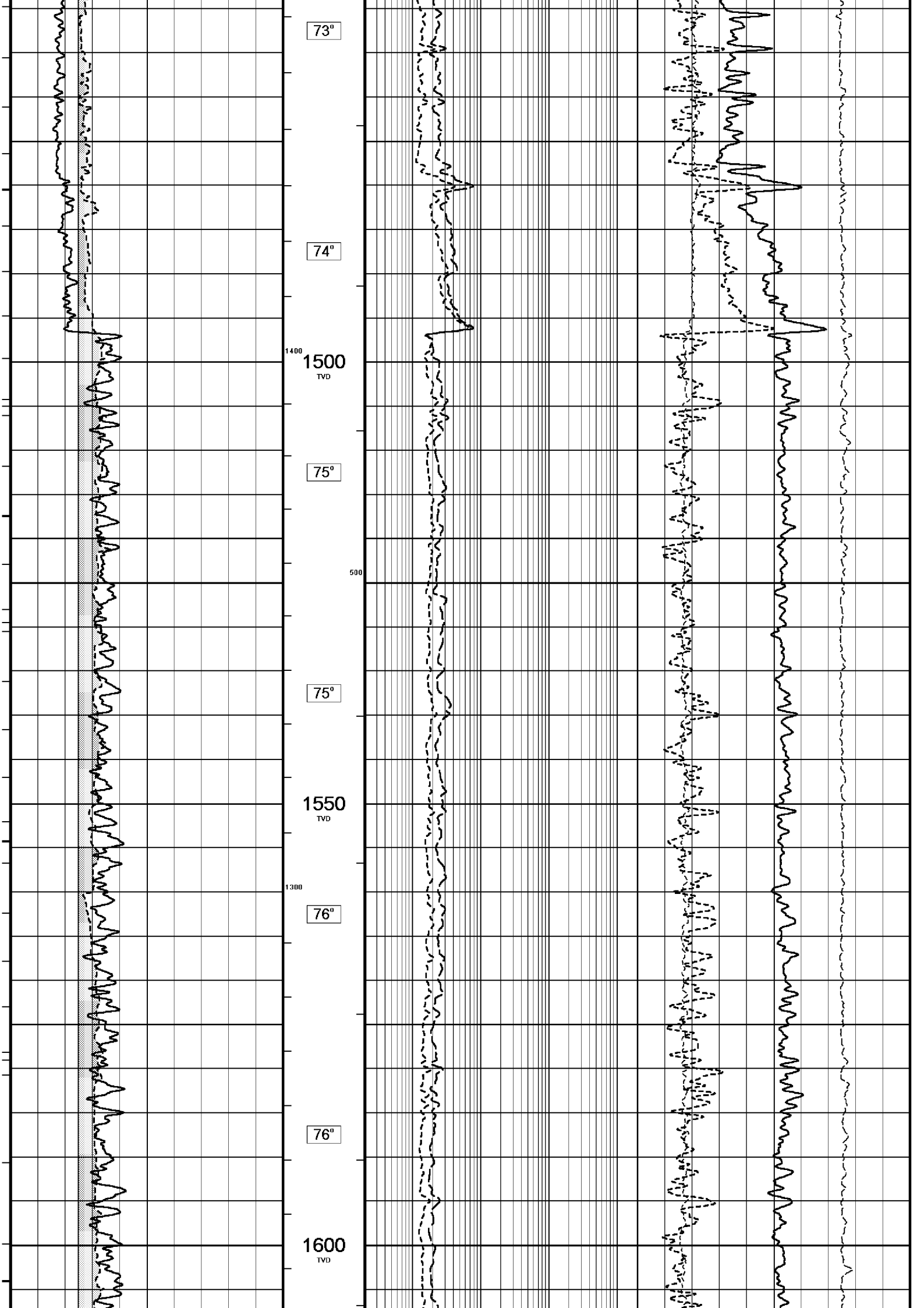


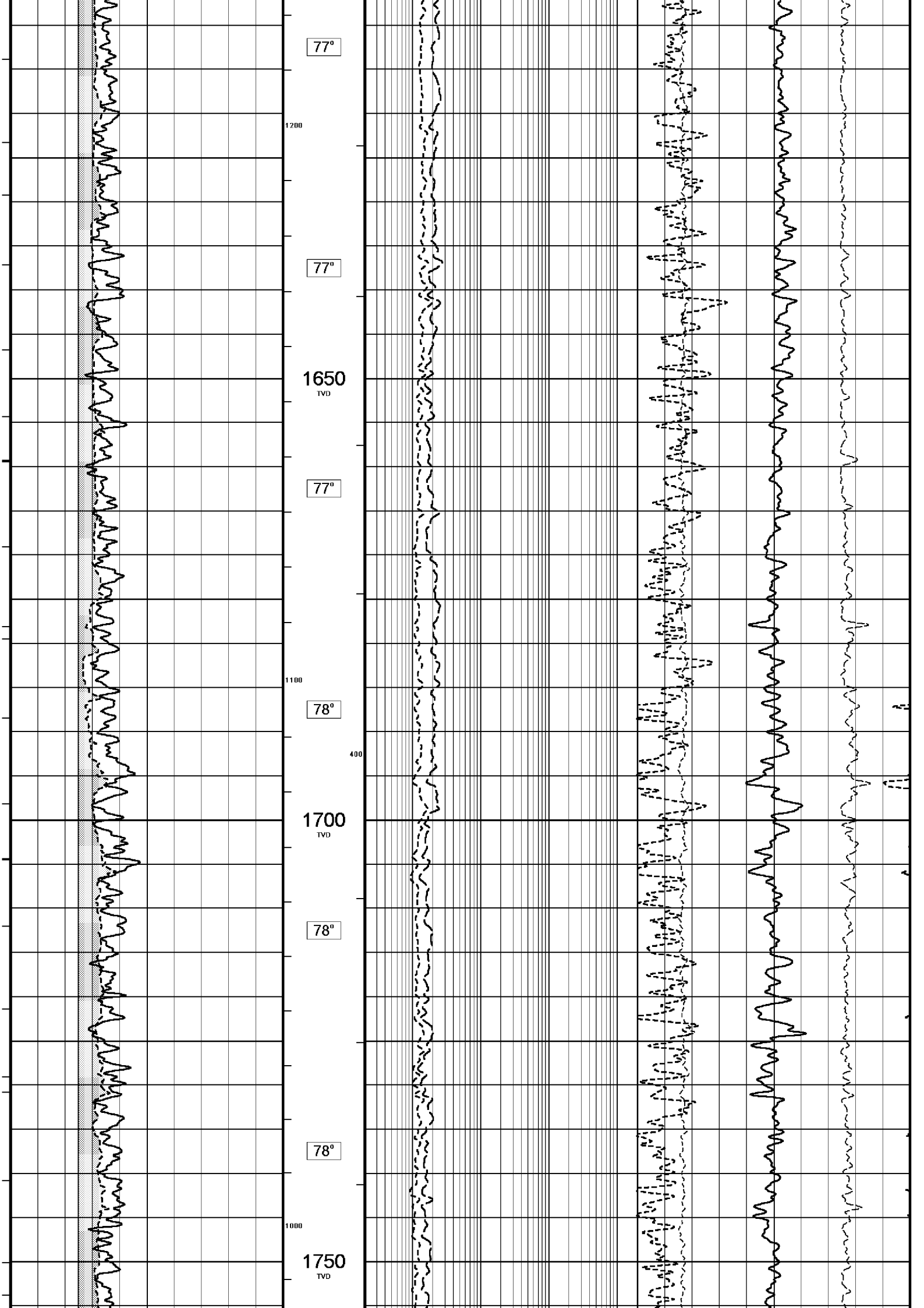


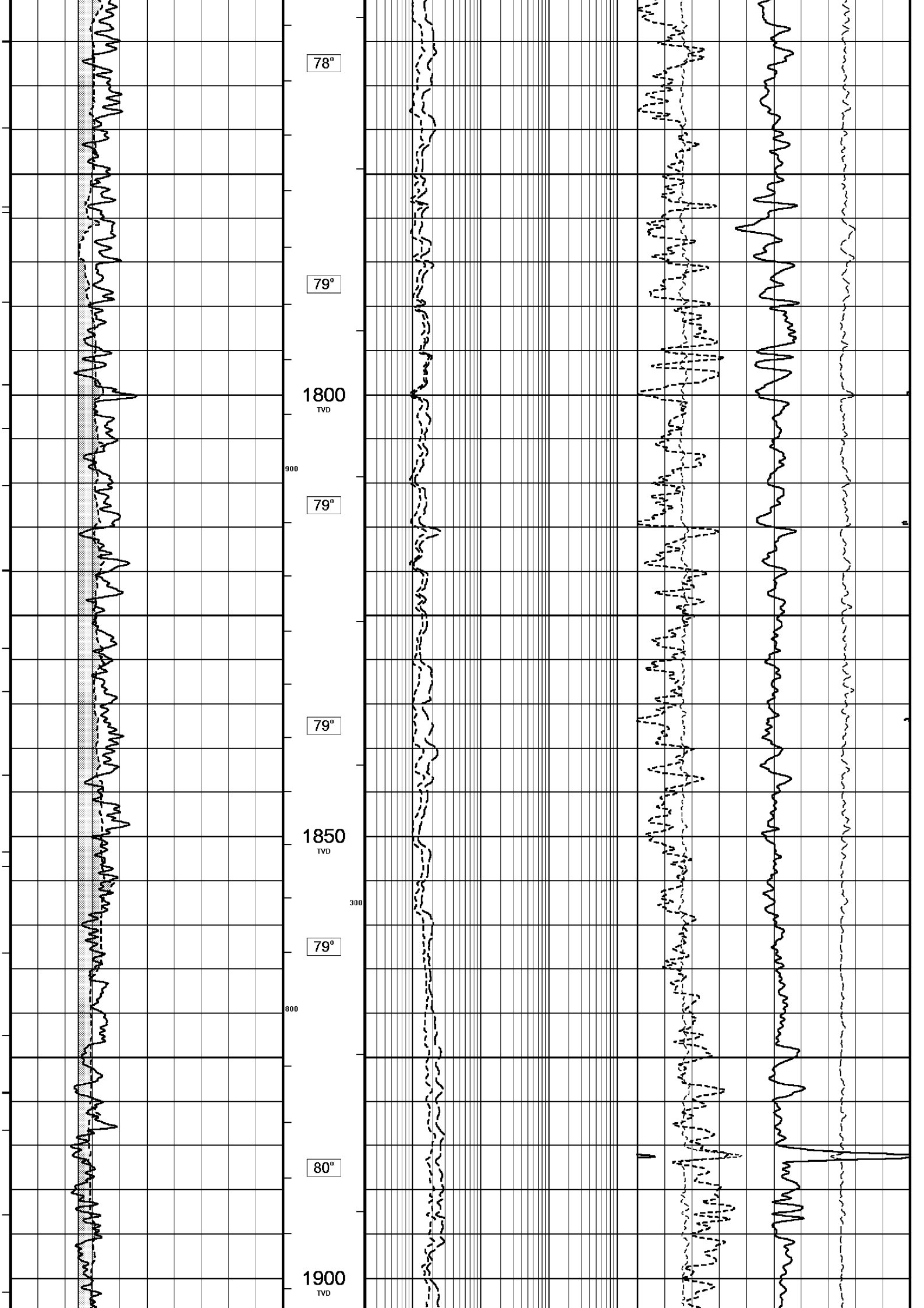


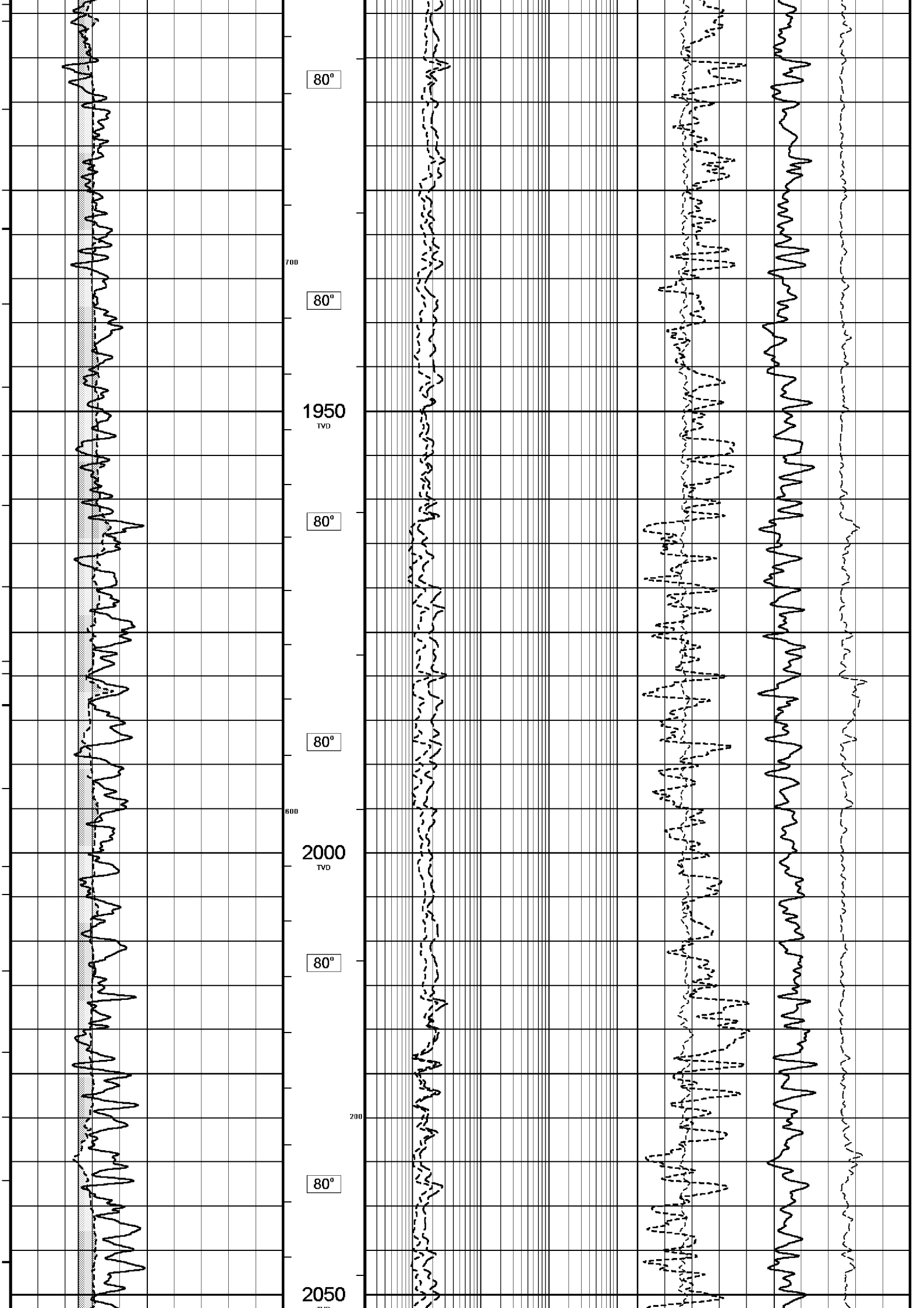


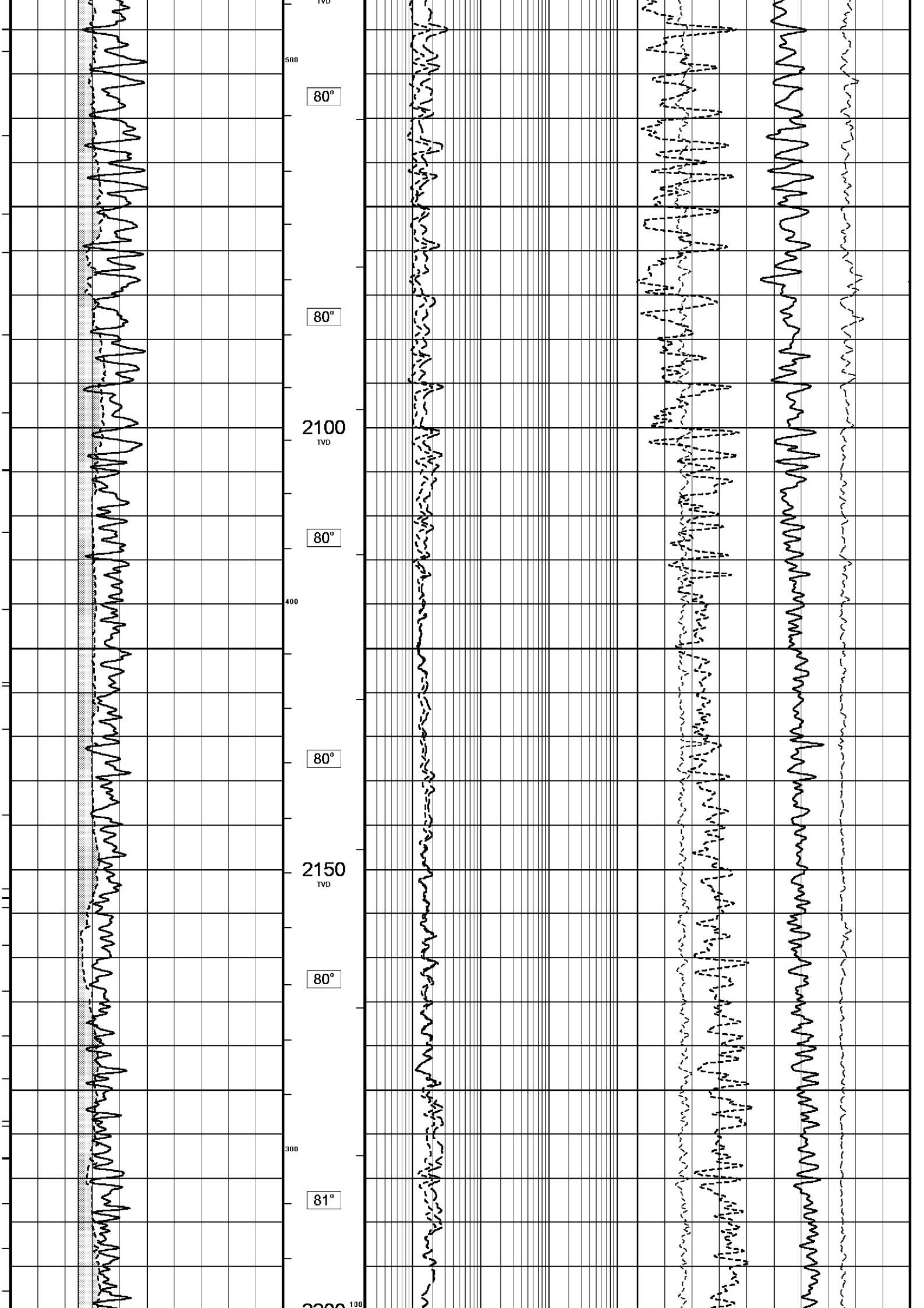


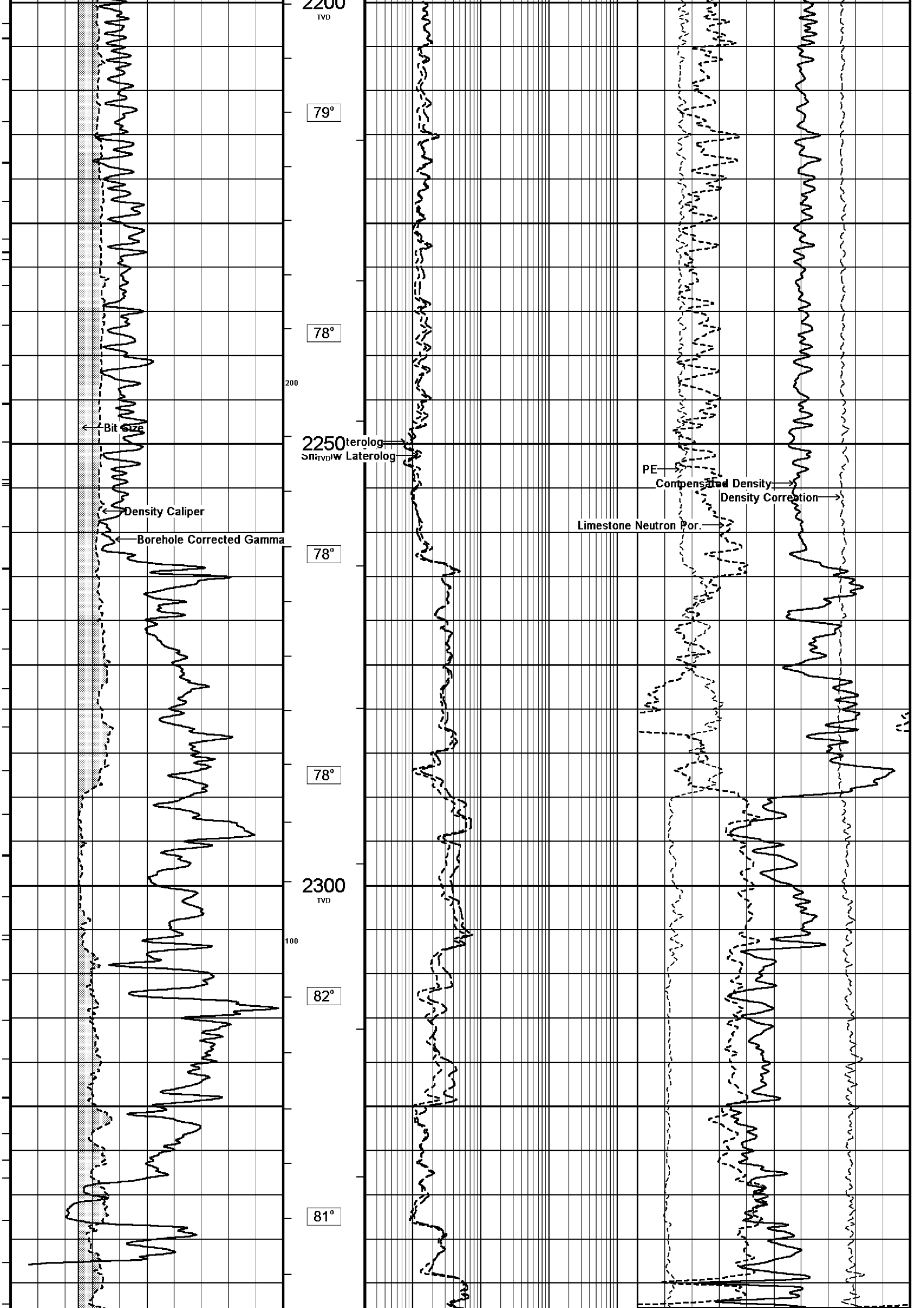


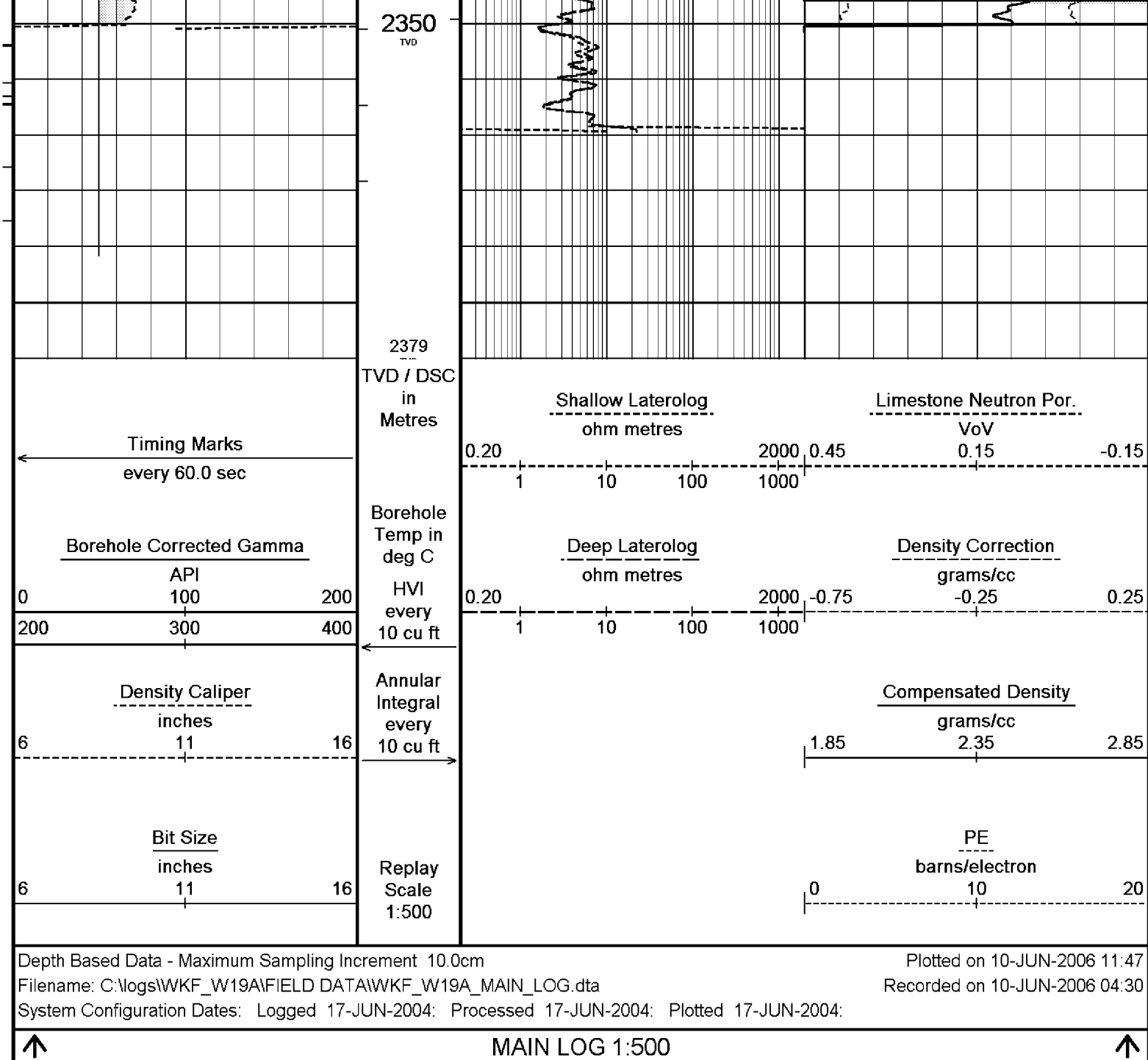












BEFORE SURVEY CALIBRATION

C:\logs\WKF_W19A\FIELD DATA\WKF_W19A_MAIN_LOG.dta

General Constants All 000

General Parameters

Mud Resistivity	0.122	ohm-metres
Mud Resistivity Temperature	25.000	degrees C
Water Level	0.000	metres
Density/Neutron Processing	Wet Hole	

Hole/Annular Volume and Differential Caliper Parameters

HVOL Caliper 1	Density Caliper	
HVOL Caliper 2	Bit Size	
Annular Volume Diameter	7.000	inches
Caliper for Differential Caliper	None	

Rwa Parameters

Porosity used	Base Density Porosity
Resistivity used	Deep Induction
RWA Constant A	0.610
RWA Constant M	2.150

	Measured	Calibrated(Deg C)
Lower	0.00	0.00
Upper	100.00	100.00

High Resolution Temperature Constants MCG 142

Pre-filter Length 11

Gamma Calibration MCG 142

Field Calibration on 7-JUN-2006 23:40

	Measured	Calibrated (API)
Background	12	8
Calibrator (Gross)	1393	917
Calibrator (Net)	1381	909

Gamma Constants MCG 142

Gamma Calibrator Number	60	
Mud Density	1.13	gm/cc
Caliper Source for Processing	Density Caliper	
Tool Position	Eccentred	
Concentration of KCl	0.00	kppm

Neutron Calibration MDN 085

Base Calibration on 1-JUN-2006 14:00

Field Check on 8-JUN-2006 01:26

Base Calibration

	Measured		Calibrated (cps)	
	Near	Far	Near	Far
	3121	97	3714	110
Ratio	32.033		33.764	

Field Calibrator at Base

	Calibrated (cps)
	1457 2120
Ratio	0.687

Field Check

	Calibrated (cps)
	1449 2113
Ratio	0.686

Neutron Constants MDN 085

Neutron Source Id	NSN-E-739	
Neutron Jig Number	NEC-E-052	
Epithermal Neutron	No	
Caliper Source for Processing	Bit Size	
Stand-off	0.00	inches
Mud Density	1.13	gm/cc
Limestone Sigma	7.10	cu
Sandstone Sigma	4.26	cu
Dolomite Sigma	4.70	cu
Formation Pressure Source	None	
Formation Pressure	N/A	kpsi
Temperature Source	MCG External Temperature	
Temperature	N/A	degrees C
Mud Salinity	0.00	kppm
Formation Fluid Salinity Source	None	
Formation Fluid Salinity	N/A	kppm
Barite Mud Correction	Not Applied	

Caliper Calibration MPD 083

Base Calibration on 31-MAY-2006 16:59

Field Calibration on 8-JUN-2006 01:20

Base Calibration

Reading No	Measured	Calibrator Size (in)
1	14224	4.01
2	22476	5.99
3	30896	7.98
4	39296	9.94
5	48692	12.01
6	N/A	N/A

Field Calibration

	Measured Caliper (in)	Actual Caliper (in)
	7.92	7.98

Photo Density Calibration MPD 083

Base Calibration on 31-MAY-2006 17:21

Field Check on 8-JUN-2006 01:18

Density Calibration

Density Calibration		Measured		Calibrated (sdu)	
Base Calibration		Near	Far	Near	Far
Reference 1		55199	18450	53111	19310
Reference 2		25968	2457	24951	2530
Field Check at Base					
		943.5	1085.5		
Field Check					
		940.2	1083.2		

PE Calibration				
Base Calibration		Measured		Calibrated
	WS	WH	Ratio	Ratio
Background	178	808		
Reference 1	17485	55005	0.319	0.320
Reference 2	6890	25822	0.268	0.273
Field Check at Base				
	178.4	807.6		
Field Check				
	176.2	805.7		

Density Constants MPD 083

Density Source Id	NSDL 242
Nylon Calibrator Number	DNC-D-536
Aluminium/Fe Calibrator Number	DAC-D-536
Density Shoe Profile	4 inch
Caliper Source for Processing	Density Caliper
PE Correction to Density	Not Applied
Mud Density	1.13 gm/cc
Mud Density Z/A Correction	1.11
Mud Filtrate Density	1.00 gm/cc
Dry Hole Mud Filtrate Density	1.00 gm/cc
DNCT	0.00 gm/cc
CRCT	0.00 gm/cc
Matrix Density (gm/cc)	Depth (m)
2.71	0.00
0.00	0.00
0.00	0.00
0.00	0.00
0.00	0.00
0.00	0.00
0.00	0.00
0.00	0.00

Laterolog Calibration MLE 031

Base Calibration on 31-MAY-2006,16:09
Field Check on 7-JUN-2006,23:41

Base Calibration				
Channel	Resistor 1	Measured	Calibrated (ohm-m)	
		Resistor 2	Resistor 1	Resistor 2
Shallow	9.8	976.1	13.2	1321.0
Deep	9.8	976.4	7.5	755.0
Groningen	9.8	976.6	8.5	854.0
Channel	Base Check (ohm-m)		Field Check (ohm-m)	
Shallow	48.6		48.6	
Deep	27.8		27.8	
Groningen	251.6		251.6	

Laterolog Constants MLE 031

Squasher Start	40000	ohm-m
Shallow Laterolog K Factor	1.3210	
Deep Laterolog K Factor	0.7550	
Groningen Laterolog K Factor	0.8540	
Interference Rejection	50 Hz	
SP Connection	SP Bridle Electrode	
Groningen Connection	None	

Compact Swivel Head Adaptor F

SHA 71 Length: 0.83 m Weight: 26.5 lb

Compact Knuckle Joint

SKJ 100 Length: 0.66 m Weight: 24.3 lb

Compact Battery Sub.

MBS 99 Length: 4.41 m Weight: 44.1 lb

Compact Inline Standoff B

MIS 73 Length: 0.65 m Weight: 15.4 lb

Compact Stiff Bridle Electrode Sub.

MBE 18 Length: 3.76 m Weight: 94.8 lb

Compact Inline Standoff B

MIS 138 Length: 0.65 m Weight: 15.4 lb

Compact Stiff Bridle Electrode Sub.

MBE 19 Length: 3.76 m Weight: 94.8 lb

Compact Inline Standoff B

MIS 136 Length: 0.65 m Weight: 15.4 lb

MBE21 - THIRD BRIDLE

MLK 111 Length: 3.76 m Weight: 30.9 lb

Compact Inline Standoff B

MIS 133 Length: 0.65 m Weight: 15.4 lb

Compact Gamma

MCG 142 Length: 2.65 m Weight: 63.9 lb

32.22 m

GGCE - Borehole Corrected Gamma

31.33 m

CGXT - MCG External Temperature

Compact Memory Sub A.C

MMS 38 Length: 0.95 m Weight: 30.9 lb

Compact Knuckle Joint
SKJ 45 Length: 0.66 m Weight: 24.3 lb

Compact Swivel Head Adaptor F
SHA 64 Length: 0.83 m Weight: 26.5 lb

Compact Inline Bowspring A
MIS 94 Length: 1.74 m Weight: 33.1 lb

Compact Neutron
MDN 85 Length: 1.53 m Weight: 50.7 lb

Compact Density/Caliper
MPD 83 Length: 2.92 m Weight: 90.4 lb

Compact Inline Bowspring A
MIS 24 Length: 1.74 m Weight: 33.1 lb

Compact Swivel Head Adaptor
SHA 28 Length: 0.83 m Weight: 26.5 lb

Compact Knuckle Joint
SKJ 110 Length: 0.66 m Weight: 24.3 lb

Compact Inline Standoff B
MIS 72 Length: 0.65 m Weight: 15.4 lb

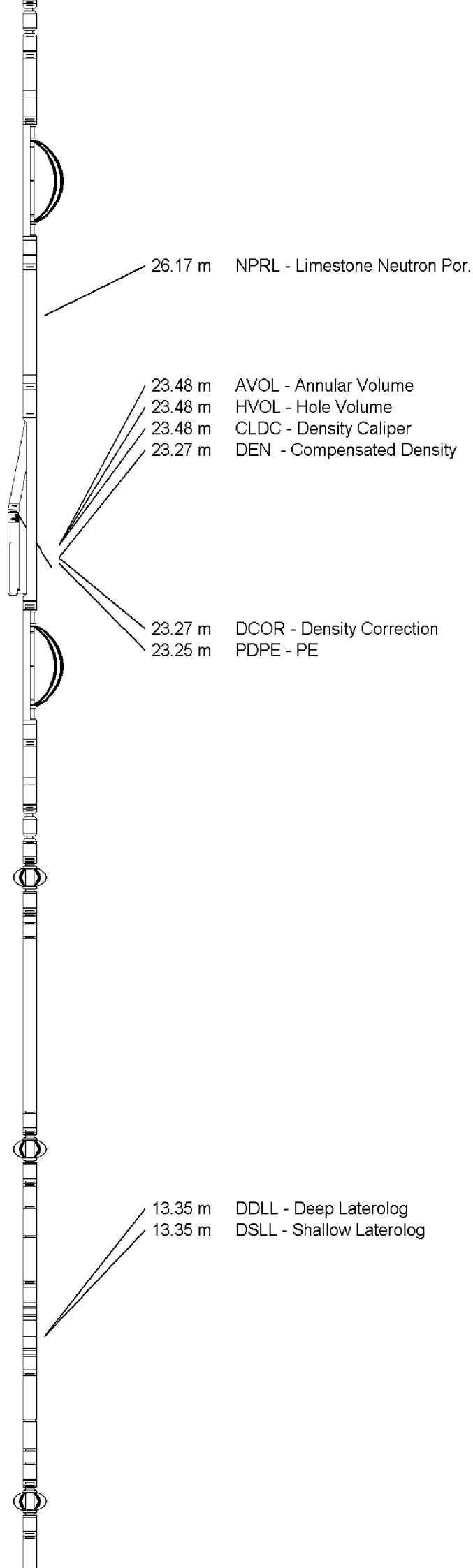
Compact Upper Guard Sub.
MUG 30 Length: 2.74 m Weight: 68.3 lb

Compact Inline Standoff B
MIS 141 Length: 0.65 m Weight: 15.4 lb

Compact Laterolog Electrode Sub.
MLE 31 Length: 3.76 m Weight: 92.6 lb

Compact Inline Standoff B
MIS 127 Length: 0.65 m Weight: 15.4 lb

Compact Lower Guard Sub.



MLG 7 Length: 2.44 m Weight: 55.1 lb

Compact Inline Standoff B
MIS 129 Length: 0.65 m Weight: 15.4 lb

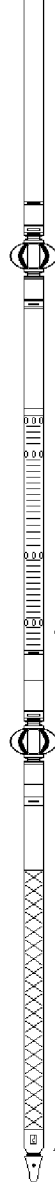
Compact Sonic
MSS 66 Length: 3.82 m Weight: 72.8 lb

Compact Inline Standoff B
MIS 126 Length: 0.65 m Weight: 15.4 lb

Compact Induction
MAI 39 Length: 3.29 m Weight: 48.5 lb

Pressure Bung + Hole Finder
HFS 4 Length: 0.40 m Weight: 6.6 lb

Total Length: 54.01 m Weight: 1201.5 lb



4.60 m TR22 - 5' Transit Time
4.60 m TR11 - 4' Transit Time
4.60 m TR21 - 3' Transit Time
4.60 m TR12 - 6' Transit Time

4.60 m DT35 - 3-5' Compensated Sonic

Tool Zero (0.44m from bottom)

All measurements relative to tool zero.

COMPANY	ESSO AUSTRALIA PTY.LTD
WELL	WKF W19A
FIELD	KINGFISH GDA94
PROVINCE/COUNTY	BASS STRAIT, VICTORIA
COUNTRY/STATE	AUSTRALIA

Elevation Kelly Bushing	metres	First Reading	2358.95	metres
Elevation Drill Floor	33.43 metres	Depth Driller	2373.41	metres
Elevation Ground Level	-76.13 metres	Depth Logger	2370.70	metres



DUAL LATEROLOG - GR
DENSITY - NEUTRON
1:500 TVD